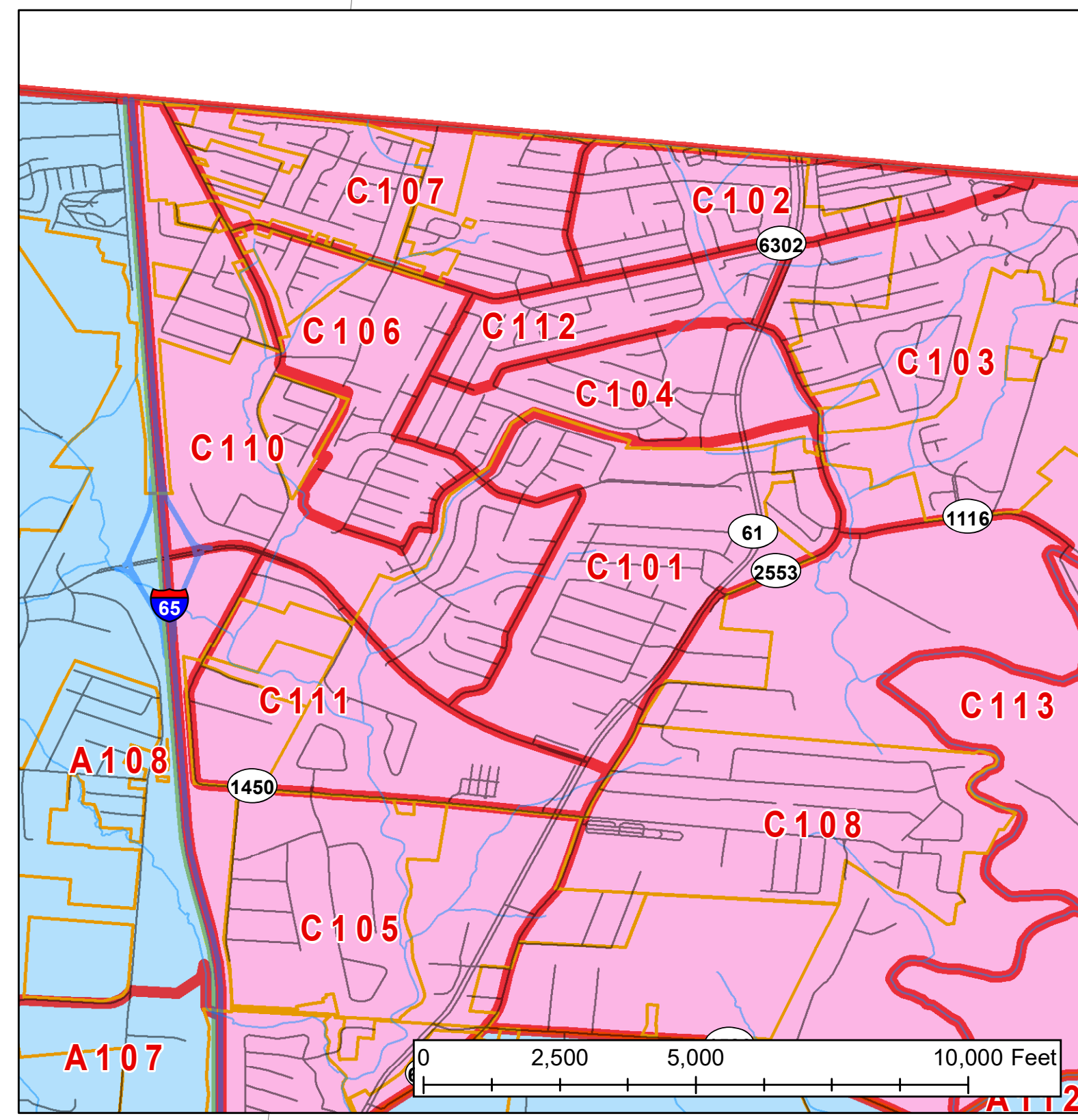
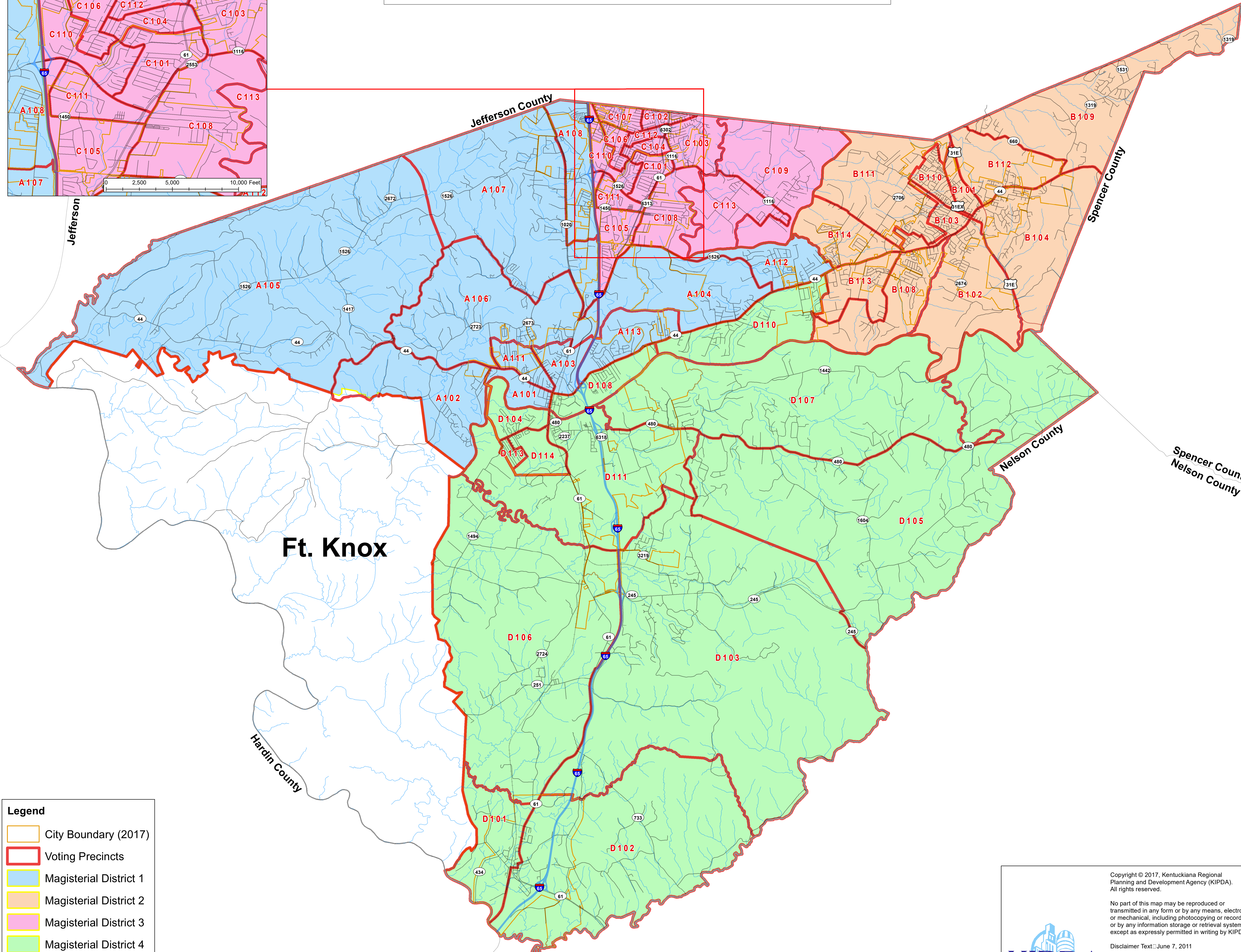
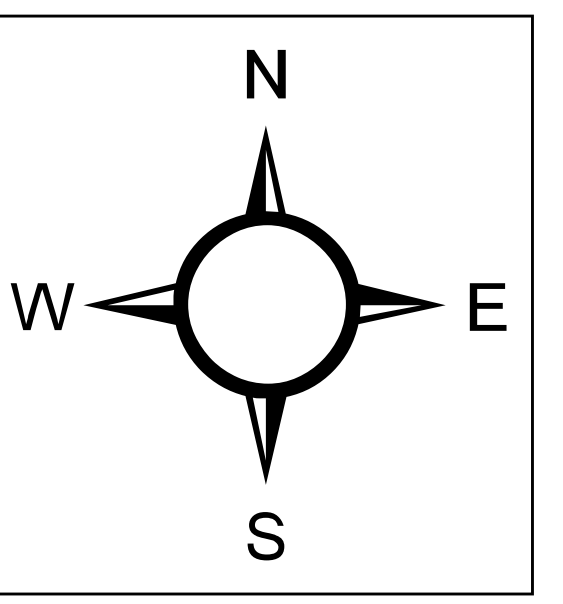


Northern Cities Inset



Bullitt County Voting Precincts

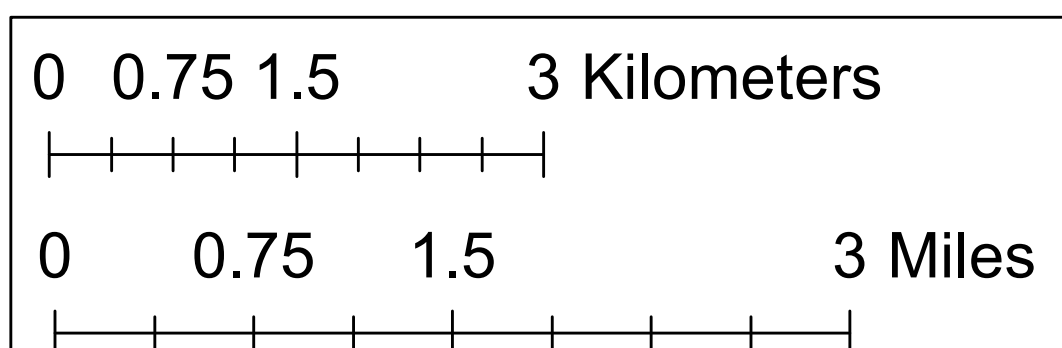
Magisterial Districts




Ft. Knox

Legend

- City Boundary (2017)
- Voting Precincts
- Magisterial District 1
- Magisterial District 2
- Magisterial District 3
- Magisterial District 4



- A101 SHEPHERDSVILLE #1
- A102 SHEPHERDSVILLE #1A
- A103 SHEPHERDSVILLE #3
- A104 PLEASANT GROVE #4N
- A105 CUIPO #13
- A106 SHEPHERDSVILLE #2A
- A107 BROOKS #12
- A108 BROOKS #12A
- A111 SHEPHERDSVILLE #3A
- A112 PLEASANT GROVE #4A
- A113 SHEPHERDSVILLE #2N
- B101 MT WASHINGTON #7
- B102 MT WASHINGTON #8
- B103 MT WASHINGTON #9
- B104 MT WASHINGTON #10
- B108 MT WASHINGTON #8A
- B109 MT WASHINGTON #7A
- B110 MT WASHINGTON #9N
- B111 MT WASHINGTON #9B
- B112 MT WASHINGTON #7B
- B113 MT WASHINGTON #8B
- B114 MT WASHINGTON #9C
- C101 HEBRON #5
- C102 MARYVILLE #6
- C103 ZONETON #11A
- C104 MARYVILLE COUNTY #19
- C105 HEBRON #5A
- C106 HEBRON #5B
- C107 MARYVILLE #6A
- C108 ZONETON #11B
- C109 ZONETON #11N
- C110 HEBRON #20
- C111 HEBRON #21
- C112 MARYVILLE SOUTH #19A
- C113 ZONETON #11
- D101 LEBANON JUNCTION #14
- D102 LEBANON JUNCTION #15
- D103 BERNHEIM #16
- D104 BEECH GROVE #17
- D105 CEDAR GROVE #18
- D106 BERNHEIM #16A
- D107 CEDAR GROVE #18A
- D108 SHEPHERDSVILLE #2
- D110 PLEASANT GROVE #4
- D111 SALT RIVER #17A
- D113 BEECH GROVE #17B
- D114 BEECH GROVE #17C



Copyright © 2017, Kentuckiana Regional Planning and Development Agency (KIPDA). All rights reserved.

No part of this map may be reproduced or transmitted in any form or by any means, electronic or mechanical, including photocopying or recording, or by any information storage or retrieval system, except as expressly permitted in writing by KIPDA.

Disclaimer Text: June 7, 2011

Limitation of Liability: KIPDA staff has no indication or reason to believe there are any inaccuracies or defects in information incorporated in this work and make NO representations of any kind, including, but not limited to, the warranties of merchantability or fitness for a particular use, nor are any such warranties to be implied, with respect to this information or data furnished herein.

Created by KIPDA staff on September 25, 2017